



# Newsletter

July 2025

*Taking off  
this Friday!*



*To Dallas Love Field every Friday, Sunday, and Monday.*



Hop on, get comfortable, and go. JSX offers simple, effortless, premium travel.  
Travel in style at [flyhobbs.com](https://flyhobbs.com).

JSX will begin nonstop service between Dallas Love Field (DAL) and Hobbs, New Mexico (HOB) on **August 1, 2025**. Flights will operate three days per week, one flight per day, on Mondays, Fridays, and Sundays, with fares beginning at \$159 one-way. Tickets are available now at [flyhobbs.com](https://flyhobbs.com) or [jsx.com](https://jsx.com) for travel through February 1, 2026.

Passengers can expect a premium, hassle-free experience aboard 30-seat jets featuring business-class legroom, free high-speed Starlink Wi-Fi, complimentary snacks and cocktails, and two checked bags. Private-terminal check-ins take just 20 minutes, offering a convenient alternative to the hours-long drive to larger airports.





## New Mexico Junior College Cuts Ribbon on New Steve McCleery Industrial Training Center

We are excited to share that New Mexico Junior College celebrated the grand opening of its brand-new Steve McCleery Industrial Training Center on Thursday, July 17. The grand opening and naming ceremony emphasized NMJC's commitment to workforce development, honoring the late Dr. Steve McCleery who served the college faithfully for over 35 years. The new center will provide hands-on training in industrial programs, strengthening career opportunities across Lea County. Lea County State Bank also presented New Mexico Junior College with a \$30,000 check to go towards funding a Workforce Training Scholarship.

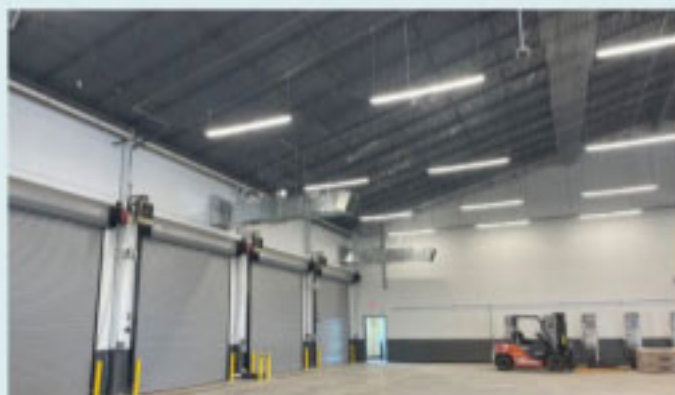
## Nor-Lea Hospital District's New Professional Physicians Center

We're excited to celebrate a major milestone for Nor-Lea Hospital District as the final structural beam was placed on their new Professional Physicians Center in Lovington. The event took place on July 16 in the parking lot east of the Lovington Wellness Center. The new building will be three stories tall and twice the size of Nor-Lea's main building and will significantly expand specialized medical services, strengthening healthcare access across Lea County. The project represents years of teamwork and commitment, with completion expected in June 2026.





# Xcel Energy Cuts Ribbon on Brand New Service Center



We are excited to share that Xcel Energy celebrated the grand opening of its brand-new service center on Monday, July 14. Located at 5200 Business Park Blvd in Hobbs, within the Hobbs Industrial Air Park (HIAP). The new facility marks a significant addition to the local community. The grand opening ceremony emphasized Xcel's commitment to local counties, cities, customers, communities, and employees, highlighting their continued excitement and dedication to serving Lea County.



## RESOURCE PORTFOLIO SUPPORTS ELECTRIC RELIABILITY, GRID RESILIENCE AND ECONOMIC GROWTH

Xcel Energy has announced new generation resource additions as part of an overall portfolio to meet the rapidly rising energy needs of its Texas and New Mexico service area.



Addition  
**5,168**  
megawatts  
by 2030

Extension  
**521**  
megawatts

**ADDITION OF 17 NEW  
POWER PROJECTS TOTALING  
5,168 MEGAWATTS BY 2030**

**ELECTRICITY DEMAND IS  
EXPECTED TO GROW  
BY MORE THAN  
40% BY 2030**



"This portfolio is about more than just adding power. We are working to increase speed to market with a stronger, modern and more resilient energy system that our customers can count on."

– Adrian Rodriguez

President, Xcel Energy – Texas, New Mexico

**TECHNOLOGIES SELECTED  
INCLUDE**



**3,200  
MEGAWATTS**

Dispatchable generation,  
energy storage



**1,968  
MEGAWATTS**

Wind and solar  
facilities

The projects are also expected to deliver significant economic benefits across both states. In New Mexico, a third-party analysis projects up to \$5 billion in economic impact over five years, driven by oil and gas industry expansion and increased electrification.

To help meet New Mexico's 50% renewable energy requirement by 2030, two solar projects are also included as additions to the portfolio and will be dedicated to New Mexico customers.



# New Del Norte Middle School

## Groundbreaking

Join Hobbs Municipal Schools as we celebrate the groundbreaking of the new Del Norte Middle School!

- Monday, Aug. 4th @ 9:00 am
- Millen Dr. and JaRob Dr. Intersection



## EVENT ASSISTANCE

As we step into a new fiscal year, the EDC of Lea County is thrilled to continue our mission of fostering growth and prosperity in our vibrant community. We are eager to collaborate and support our members by sharing your upcoming events and initiatives.

Should you require event coordination assistance, the EDC is here to help. Whether it's promoting your events, assistance with coordination or sharing exciting news, we are dedicated to ensuring your success.

Our spacious, large conference room and small conference room for smaller meetings remain available upon reservation for your meetings, luncheons, and special events.

Whether you're planning a large gathering or a smaller meeting, both EDC conference rooms are available for reservation to suit your event needs. For room reservations or event assistance, please reach out to Mady Zamora at [mady@edclc.org](mailto:mady@edclc.org). Let's make this year one of collaboration, growth, and shared success.





# Lea County

## FAIR AND RODEO

Get ready for the 89th Annual Lea County Fair and PRCA Rodeo, happening August 1st through August 9th, 2025! Whether you're a longtime resident or a visitor, the Lea County Fair and Rodeo is a cherished tradition that brings our community together in celebration. This year's event promises to be more exciting than ever, offering a wide array of activities and entertainment for the whole family. From indulging in arts & crafts showcase, carnival, concerts, Xtreme Bull Event, PRCA Rodeo, Livestock Shows, there's something for everyone.

Don't forget to stop by the indoor exhibits and visit the FlyHobbs booth! Here, you can learn more about our local airport services, grab some free goodies, and enter our exciting yearly giveaway.



**THEY'RE COMING!**  
**SEVEN CLASSES OF**  
**AIR RACING.**  
**FIVE DAYS OF ACTION.**  
**ONE CHANCE TO SAY YOU WERE THERE.**



*AirRace.org*



**SEPTEMBER 10-14, 2025**

ROSWELL, NM | ROSWELL AIR CENTER

NEW MEXICO  TRUE





## Lea County Quarterly Economic Summary

**Matched Taxable Gross Receipts (MTGR)** provide the most accurate tax data for assessing underlying economic activity. The data collection process involves matching tax payments with reported receipts for each taxpayer by industry. While more industries experienced YOY growth than decline, **MTGR** remained unchanged overall (Table 1). The largest increase came from construction, with a YOY gain of \$60.4M, while the largest decline was in retail trade, with a YOY decrease of \$67.6M.

**Table 1. Matched Taxable Gross Receipts by Industry**

Industries	FY24 - Q2	FY25 - Q2	Growth	Year over year Change
Accommodation and Food Services	\$ 52,034,875	\$ 53,451,714	\$ 1,416,839	3%
Administrative/Support & Waste Management/Remediation	\$ 48,778,623	\$ 55,303,247	\$ 6,524,624	13%
Agriculture, Forestry, Fishing, and Hunting	\$ 4,638,743	\$ 4,651,858	\$ 13,115	0%
Arts, Entertainment, and Recreation	\$ 3,588,583	\$ 3,705,750	\$ 117,167	3%
Construction	\$ 304,049,869	\$ 364,461,443	\$ 60,411,574	20%
Educational Services	\$ 2,203,205	\$ 1,191,625	\$ (1,011,580)	-46%
Finance and Insurance	\$ 3,354,904	\$ 3,658,485	\$ 303,581	9%
Health Care and Social Assistance	\$ 37,211,008	\$ 20,382,141	\$ (16,828,867)	-45%
Information	\$ 21,403,601	\$ 21,649,731	\$ 246,130	1%
Management of Companies and Enterprises	\$ 254,973	\$ 13,958	\$ (241,015)	-95%
Manufacturing	\$ 196,877,491	\$ 235,725,678	\$ 38,848,187	20%
Mining, Quarrying, and Oil and Gas Extraction	\$ 1,442,779,517	\$ 1,415,613,992	\$ (27,165,525)	-2%
Other Services (except Public Administration)	\$ 122,152,701	\$ 127,667,350	\$ 5,514,649	5%
Professional, Scientific, and Technical Services	\$ 120,641,401	\$ 150,139,713	\$ 29,498,312	24%
Public Administration	\$ 1,240,192	\$ 586,648	\$ (653,543)	-53%
Real Estate and Rental and Leasing	\$ 123,736,238	\$ 156,858,170	\$ 33,121,932	27%
Retail Trade	\$ 446,912,560	\$ 379,270,056	\$ (67,642,504)	-15%
Transportation and Warehousing	\$ 144,787,721	\$ 157,524,969	\$ 12,737,248	9%
Unclassified Establishments	\$ 65,067,439	\$ 61,471,295	\$ (3,596,144)	-6%
Utilities	\$ 125,865,872	\$ 109,520,554	\$ (16,345,318)	-13%
Wholesale Trade	\$ 298,433,142	\$ 241,041,238	\$ (57,391,904)	-19%
<b>All Industries</b>	<b>\$ 3,566,693,310</b>	<b>\$ 3,565,666,251</b>	<b>\$ (1,027,059)</b>	<b>0%</b>

Source: NM TRD - Monthly Local Government Distribution Reports (RP-500) and EDD Calculations